



Adirondack Health Institute

Lead • Empower • Innovate

PHIP Stakeholder Meeting

**“Changing the Context”
To Improve Population Health**

November
2016

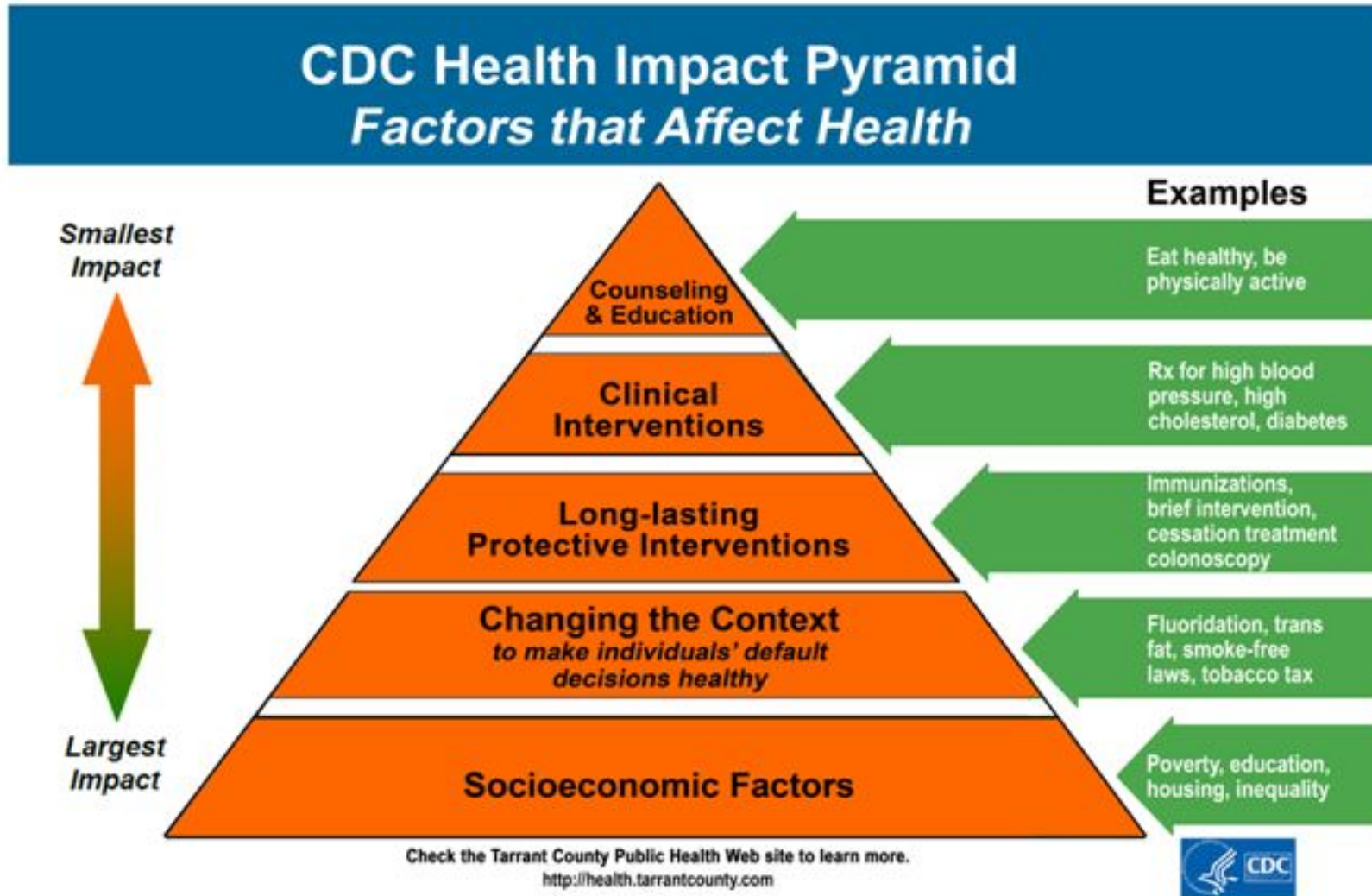
Welcome and Introductions

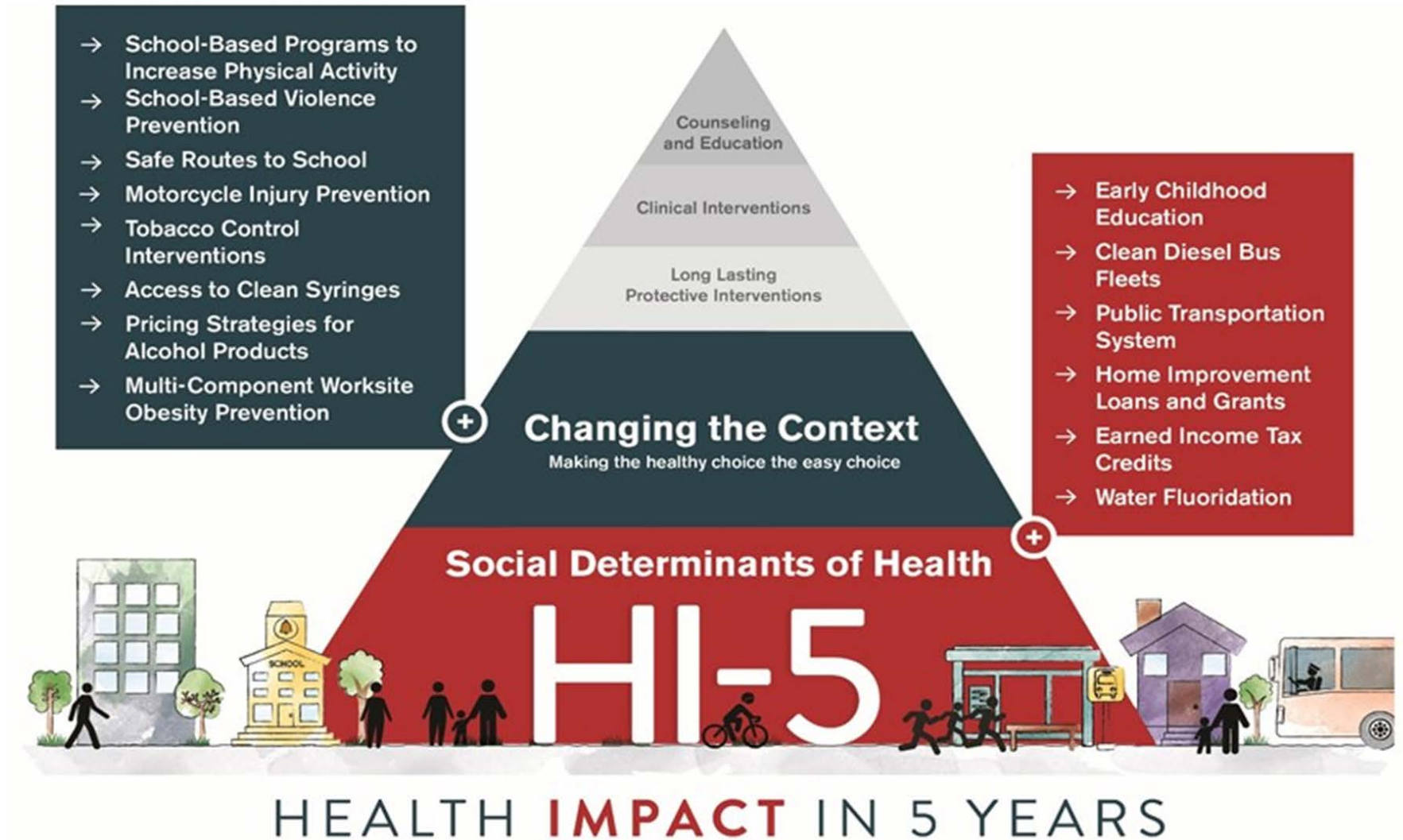
A scenic landscape featuring a large body of water in the foreground, surrounded by mountains covered in dense, colorful autumn foliage. The trees display a mix of green, yellow, orange, and red. In the distance, a small town or village is visible along the shoreline. In the immediate foreground, a building with a prominent steeple is partially obscured by trees. The sky is a clear, light blue.



Making the
healthy choice
the *easy* choice.









CONTEXT

Focus on local efforts to
change the context
to improve population health.



Hear from a panel of experts about their experiences promoting policy and environmental changes to:

- increase access to *healthy food*;
- increase opportunities for *physical activity*;
- *reduce tobacco use*.



Purpose of the Meeting





By the end of the meeting we will have identified:

- **What** “context changing” efforts to pursue
- **Where** to focus the efforts (region, county, community)
- **Who** should be involved (individuals, organizations, sectors)
- **How** to plan, organize and implement the efforts





Panel Discussion





- **Ellie Wilson**, *Senior Nutritionist – Price Chopper*
- **Jessica Darney-Buehler**, *Senior Public Health Educator – Essex County Public Health*
- **Kelly Pilkey**, *Manager – Health Promotion Center, Glens Falls Hospital*
- **Chelsea Morse**, *Senior Program Coordinator - Glens Falls Hospital*
- **Judy Rightmyer**, *Director – Capital District Tobacco-Free Communities*

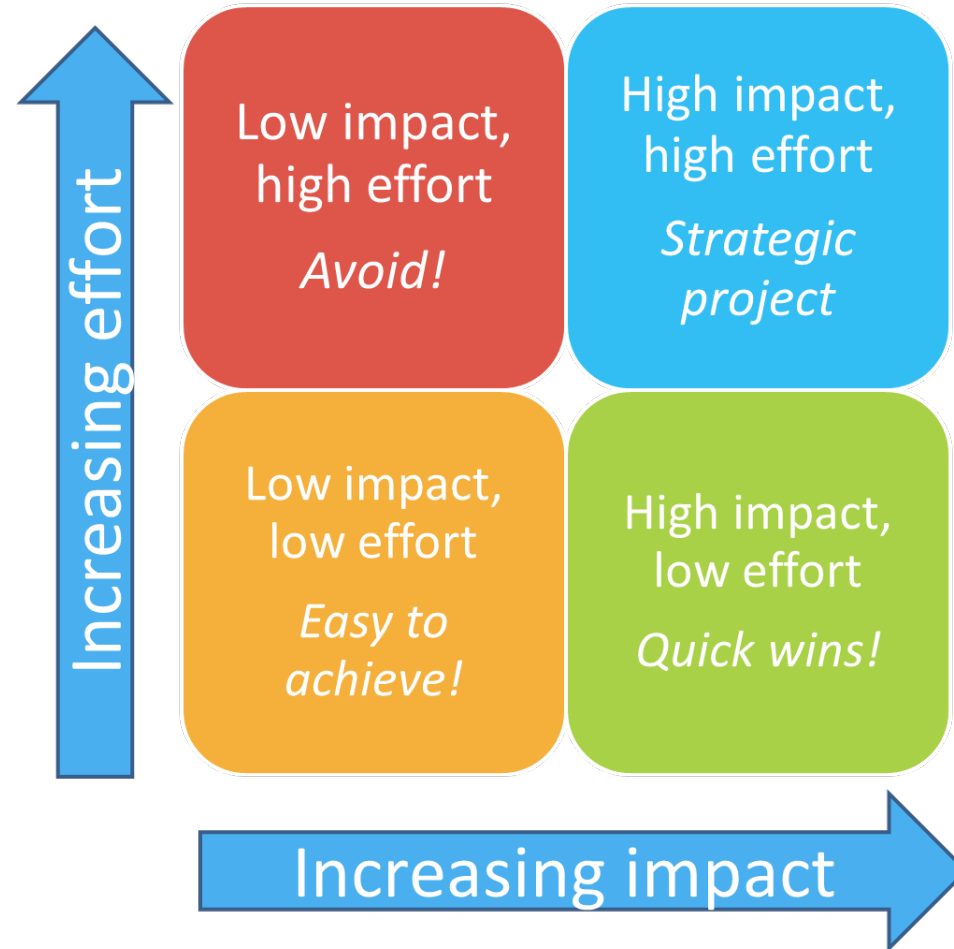


What can we do to make the *healthy* choice the *easy* choice for more North Country residents?





Impact Effort Matrix



Source: AMA. Practice transformation series: culture. 2015.
Copyright 2015 American Medical Association. All rights reserved.



Review Brainstorming Results



- Solicit additional input from a broad range of PHIP stakeholders on outcomes from today's meeting.
- Select specific efforts to pursue, where, with whom, and how.



- Organize committee(s) comprised of organizations and individuals who have a stake in seeing the efforts succeed.
- Support the committee(s') work with PHIP's resources – e.g. meeting logistics, data presentations/visualizations, awareness materials and campaigns, etc.



- Report on the progress of efforts on *HealthyADK* and at regional meetings.



Tom Tallon

ttallon@ahihealth.org

**Thank you to all the
panel members!**



a·H·I

Adirondack Health Institute

